

MADE OF LUCERNE

WATCHMAKERS'
SELECTION

2021 / 2022



CARL F. BUCHERER

LUCERNE 1888

*The very
heart of Switzerland
comes alive in
distinct timepieces
for the real
watch enthusiast.*



The story of Carl F. Bucherer began more than 130 years ago. Back then, in 1888, Carl Friedrich Bucherer opened his first boutique for watches and jewelry in Lucerne and laid the foundation for our brand. Today, we are the only family-owned Swiss watch manufacturer that is still entirely run by the founding family. The Bucherers traveled the world from the beginning of the twentieth century, and the brand expanded internationally. In spite of the cosmopolitan spirit that continues to shape our image, the family always remained loyal to their homeland in the heart of Switzerland. Along with their sense of perfection, we are still guided by their irrepressible commitment to innovation, which

includes a passion for a blend of tradition, innovation, excellence, and sustainability in everything we do.

These extraordinary values are reflected in our history, in our partnerships and, of course, in our products. I cordially invite you to immerse yourself in the world of Carl F. Bucherer and discover the new timepieces with which our manufacture is once again setting new standards!

A handwritten signature in black ink, appearing to read 'S. Moeri'.

*Sascha Moeri
CEO Carl F. Bucherer*



MAISON & HERITAGE



TRAVEL & EXPLORATION



ENTERTAINMENT & STYLE



SPORT & ADVENTURE

Carl F. Bucherer's Brand Worlds

At Carl F. Bucherer, the quest for excellence and outstanding craftsmanship is deeply rooted in our history. That spirit has been driving us every day since 1888. It is an integral part of the brand's status as a true and authentic Swiss watch manufacturer. Carl F. Bucherer is firmly committed to ensuring excellence throughout the entire production process – from the first idea to the final product.

Carl F. Bucherer produces innovative and contemporary timepieces for watch enthusiasts all around the globe – firmly rooted in Lucerne, the heart of Switzerland, the brand is at home anywhere in the world. Our fine watch collections are divided into four distinct brand worlds that represent the different aspects of its identity.



Maison

& Heritage

The Maison & Heritage brand world reflects the dedication to contemporary craftsmanship and the art of traditional watchmaking that has defined Carl F. Bucherer since its beginnings. The Maison attribute encompasses those timepieces equipped with our in-house mechanical movements featuring the peripheral technology that has come to distinguish our brand. The Maison & Heritage timepieces perfectly embody our “Made of Lucerne” essence. Each one is an expression of our values and a loving ode to our hometown.

Another proud part of this brand world is the Heritage collection, which perfectly represents the history of Carl F. Bucherer. We have been producing superb timepieces for more than 130 years, and, to honor this legacy, we created the Heritage collection, whose fine wristwatches are dedicated to the history of Swiss watchmaking, craftsmanship, and design.



CARL F. BUCHERER AND THE LUCERNE FESTIVAL ORCHESTRA: CELEBRATING THE MUSIC OF TIME

The extraordinary cooperation with the Lucerne Festival Orchestra and its top-class orchestra is a special honor and a historical milestone for Carl F. Bucherer. As brands of Lucerne origin, the watch manufacturer and the music festival share a clear connection. But the similarities go deeper: a traditional craft, an international team, and a young, creative mindset – the Lucerne Festival Orchestra took on the sonorous challenge with an approach similar to that taken by the watchmakers and designers at Carl F. Bucherer. And, last but not least, it is the passion for beauty that inspired the watch brand and the orchestra to create two true masterpieces.

The new Manero Minute Repeater Symphony not only casts a spell over watch enthusiasts: it also inspired the renowned Lucerne Festival Orchestra.

The result is a musical masterpiece called PERIPHERY and a collaboration that is unique in the watch industry: the brand commissioned Swedish composer Lisa Streich to compose a piece dedicated to the sound of the watch and its sophisticated mechanics, which ends on the fine tone of the minute repeater.

MANERO MINUTE REPEATER

SYMPHONY

LIMITED EDITION

The Manero Minute Repeater Symphony is the most extraordinary timepiece that Carl F. Bucherer has created in a history spanning over 130 years, and it is literally ringing in a new era. With its extremely complex mechanism, Carl F. Bucherer not only demonstrates the highest level of manufacturing competence, but also underlines its leading role in the field of peripheral technology, for which it has paved the way. It's fair to say that this timepiece sets new standards in peripheral technology. It features three peripheral movement elements, all developed in-house and patented by Carl F. Bucherer: the peripheral rotor that we patented in 2008, the "floating" Tourbillon we launched 10 years later, and a minute repeater complication with a peripherally mounted regulator.



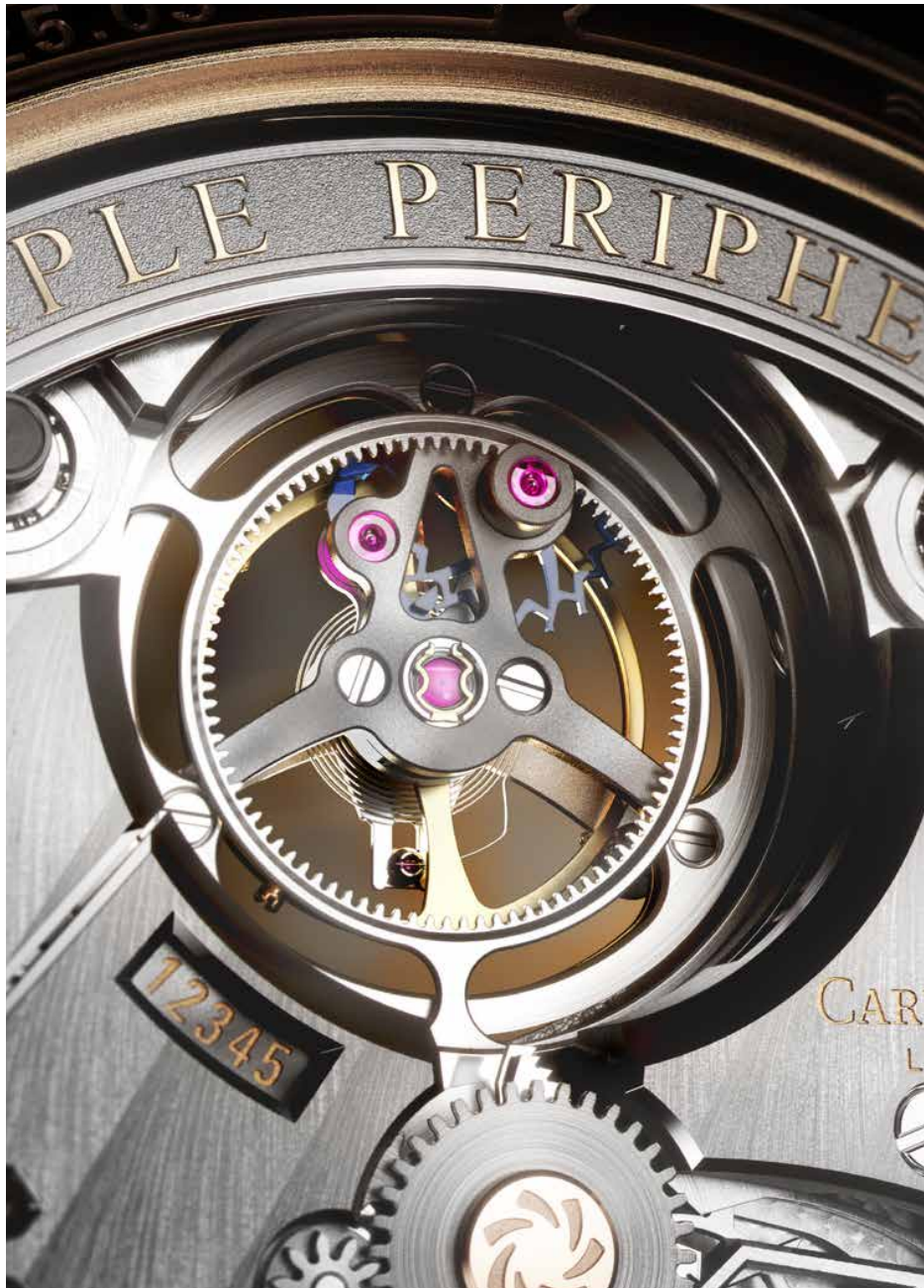


MANUFACTURE CALIBER

CFB MR3000

Peripheral Triad

The elaborately finished and COSC-certified manufacture movement with a 65-hour power reserve now defines a new era in peripheral technology as the beating heart of the Manero Minute Repeater Symphony – the CFB MR3000 combines the highest complications to create a truly peripheral symphony and sets new horological standards. For the first time, Carl F. Bucherer's peripheral rotor is combined not only with a peripherally mounted floating Tourbillon, but also with the peripherally mounted minute repeater regulator.



The Peripheral Winding System

Peripheral technology, which the CFB MR3000 uses three times, is among the brand's unmistakable trademark features. It was premiered in 2008 with the peripheral rotor. The in-house manufacture caliber CFB A1000 was the first series-production movement ever to feature this technology. Its bidirectional automatic winding mechanism draws its energy from a peripheral rotating flywheel. In addition to its efficiency, the narrow rotor also reveals the beauty of the movement.

The Peripheral Tourbillon

The Tourbillon – the classic complication designed to offset the effects of gravity on the accuracy of the watch – is another great highlight of the art of watchmaking. The watchmakers at Carl F. Bucherer made it float – the cage of the minute Tourbillon is supported peripherally by three frictionless ceramic ball bearings that are invisible to the viewer. They ensure stability and precise guidance – a sophisticated design for which Carl F. Bucherer holds a patent.



The Peripheral Regulator

Repeater watches feature what is arguably the most admired of all complications. With its ingenious striking mechanism, hours, quarter hours, and minutes can be reproduced acoustically, giving time an additional, sensual dimension. The Manero Minute Repeater Symphony takes up the classic minute repeater and implements it innovatively – in unmistakable Carl F. Bucherer style. Its mechanism is finely orchestrated and generates two distinct tones. The gongs can be admired, most unusually, through cutouts at the edge of the dial. They are supplemented by openings at 5 o'clock and 7 o'clock, through which the work of the hammers can be observed. A window above 6 o'clock sets the scene for the innovative regulator of the watch. This element sets the rhythm of the beats. In the Manero Minute Repeater Symphony, the regulator is mounted peripherally for the first time – another development for which Carl F. Bucherer has applied for a patent.

MANERO MINUTE REPEATER

SYMPHONY

LIMITED EDITION



REF **00.10925.03.63.01**

DIMENSIONS

- \varnothing 43.80 mm
- Height 12.47 mm

MOVEMENT

- Automatic with an 18K rose gold oscillating weight
- Carl F. Bucherer manufacture caliber CFB MR3000
- COSC-certified chronometer
- Power reserve 65 hours

FUNCTIONS

- Minute repeater with two gongs
- Floating tourbillon
- Hour
- Minute
- Small seconds on tourbillon cage
- Stop-second
- Protection function for the mechanism

LIMITED EDITION

- 88 pieces

CASE

- 18K rose gold
- Domed sapphire crystal with anti-reflective coating on both sides
- Case back with sapphire crystal with anti-reflective coating on both sides

WATER RESISTANCE

- 1 bar (10m)

DIAL

- 18K white gold Pd210 electroplated and grained pattern
- 18K rose gold hands and indexes

STRAP

- Dark brown Louisiana alligator leather, lining in dark brown Louisiana alligator leather, hand-stitched

BUCKLE

- 18K rose gold pin lock folding clasp



THE MANERO PERIPHERAL BIGDATE:
A CONTEMPORARY INTERPRETATION
OF OUR MANUFACTURE COMPETENCE
AND SPIRIT OF INNOVATION

The Manero Peripheral BigDate is based on all the characteristics that define Carl F. Bucherer today: a long history, a proud heritage, a founding family, a cutting-edge manufacturer, the skills of some of the world's most talented watchmakers and, of course, the innovation that has established the brand as the industry's leader in peripheral technology: the striking contemporary timepiece is equipped with the brand's caliber CFB A2011, an automatic mechanical movement with a peripheral rotor.

The Manero Peripheral BigDate was created for women and men who will appreciate the eye-catching dial distinguished by its contrasting small-seconds subdial at 6 o'clock. The effect is complemented by a power reserve indicator at three o'clock, a day-of-the-week aperture at 9 o'clock, and, finally, the feature that gives the watch its name: the big date window at 10 o'clock.

MANERO PERIPHERAL

BIGDATE



REF 00.10926.08.53.01

DIMENSIONS

- \varnothing 41.6 mm
- Height 12.1 mm

MOVEMENT

- Automatic
- CFB A2011
- COSC-certified chronometer
- Peripheral Technology
- Power reserve 55 hours

FUNCTIONS

- Hour
- Minute
- Small seconds
- Big date
- Day of the week



REF 00.10926.08.53.21

CASE

- Stainless steel
- Domed sapphire crystal with anti-reflective coating on both sides
- Case back with sapphire crystal

WATER RESISTANCE

- 3 bar (30 m)

DIAL

- Light blue with small-seconds indication in beige

STRAP

- Textile in beige or stainless steel

BUCKLE

- Stainless steel pin lock folding clasp or stainless steel folding clasp



REF 00.10926.08.93.01

DIMENSIONS

- \varnothing 41.6 mm
- Height 12.1 mm

MOVEMENT

- Automatic
- CFB A2011
- COSC-certified chronometer
- Peripheral Technology
- Power reserve 55 hours

FUNCTIONS

- Hour
- Minute
- Small seconds
- Big date
- Day of the week



REF 00.10926.08.93.21

CASE

- Stainless steel
- Domed sapphire crystal with anti-reflective coating on both sides
- Case back with sapphire crystal

WATER RESISTANCE

- 3 bar (30 m)

DIAL

- Dark gray with small-seconds indication in olive-green

STRAP

- Textile in olive-green or stainless steel

BUCKLE

- Stainless steel pin lock folding clasp or stainless steel folding clasp





THE HERITAGE COLLECTION:

LIVING UP TO ITS NAME

The Carl F. Bucherer Heritage collection was created to honor our legacy of more than 130 years of creativity and innovation, and to celebrate our hometown of Lucerne.

Since the introduction of the Heritage collection in 2018, we have successfully launched models that were inspired by some of the exciting, groundbreaking timepieces we created in the last century. While the new watches reflect our proud history, they are resolutely contemporary, combining tradition, excellence, and a unique spirit.

The watches in the Carl F. Bucherer Heritage collection effortlessly blend the aesthetic spirit of a golden age of watch design with contemporary, state-of-the-art mechanical excellence.

A FAMILY CAR THAT INSPIRED CARL F. BUCHERER'S WATCHMAKERS



The Carl F. Bucherer limited-edition Heritage BiCompax Annual Lucerne was inspired by a classic Lincoln Cosmopolitan Town Sedan with a remarkable history. In 1949, the car, originally belonged to Carl Eduard Bucherer, the son of our founder, Carl Friedrich Bucherer. It changed hands several times over the years. In 2013, however, Jörg G. Bucherer, Carl Eduard's son, was able to buy the family car and have it restored to its original glory. The new watch, with color details inspired by the restored automobile, is a tribute to the Bucherer family, to a remarkable automobile, and to Carl F. Bucherer's hometown of Lucerne.



HERITAGE BICOMPAX

ANNUAL LUCERNE

LIMITED EDITION



REF **00.10803.08.12.22**

COMPLEMENTARY STRAP + CLASP

DIMENSIONS

- \varnothing 41 mm
- Height 14.15 mm

MOVEMENT

- Automatic
- CFB 1972 caliber
- Power reserve 42 hours

FUNCTIONS

- Chronograph: minutes and seconds counter
- Annual calendar
- Big date
- Hour
- Minute
- Small seconds
- Tachymeter scale

LIMITED EDITION

- 188 pieces

CASE

- Stainless steel
- Double-domed sapphire crystal with anti-reflective coating on both sides
- Case back with sapphire crystal

WATER RESISTANCE

- 3 bar (30 m)

DIAL

- Silver colored with light blue counters

STRAP / BUCKLE

- Stainless steel bracelet with quick release system, folding clasp; additional calfskin leather strap with quick release system and stainless steel pin-lock folding clasp

HERITAGE BICOMPAX ANNUAL LIMITED EDITION



REF 00.10803.08.32.01

DIMENSIONS

- \varnothing 41 mm
- Height 14.15 mm

MOVEMENT

- Automatic
- CFB 1972 caliber
- Power reserve 42 hours

FUNCTIONS

- Chronograph: minutes and seconds counter
- Annual calendar
- Big date
- Hour
- Minute
- Small seconds
- Tachymeter scale

LIMITED EDITION

- 888 pieces



REF 00.10803.08.32.02

CASE

- Stainless steel
- Double-domed sapphire crystal with anti-reflective coating on both sides
- Case back with sapphire crystal

WATER RESISTANCE

- 3 bar (30 m)

DIAL

- Black with silver-colored counters

STRAP

- Calfskin or rubber

BUCKLE

- Stainless steel pin lock folding clasp



REF 00.10803.08.12.01

DIMENSIONS

- \varnothing 41 mm
- Height 14.15 mm

MOVEMENT

- Automatic
- CFB 1972 caliber
- Power reserve 42 hours

FUNCTIONS

- Chronograph: minutes and seconds counter
- Annual calendar
- Big date
- Hour
- Minute
- Small seconds
- Tachymeter scale

LIMITED EDITION

- 888 pieces



REF 00.10803.07.42.01

CASE

- Stainless steel or stainless steel and 18K rose gold
- Double-domed sapphire crystal with anti-reflective coating on both sides
- Case back with sapphire crystal

WATER RESISTANCE

- 3 bar (30 m)

DIAL

- Black with silver-colored counters or champagne-colored

STRAP

- Calfskin or rubber

BUCKLE

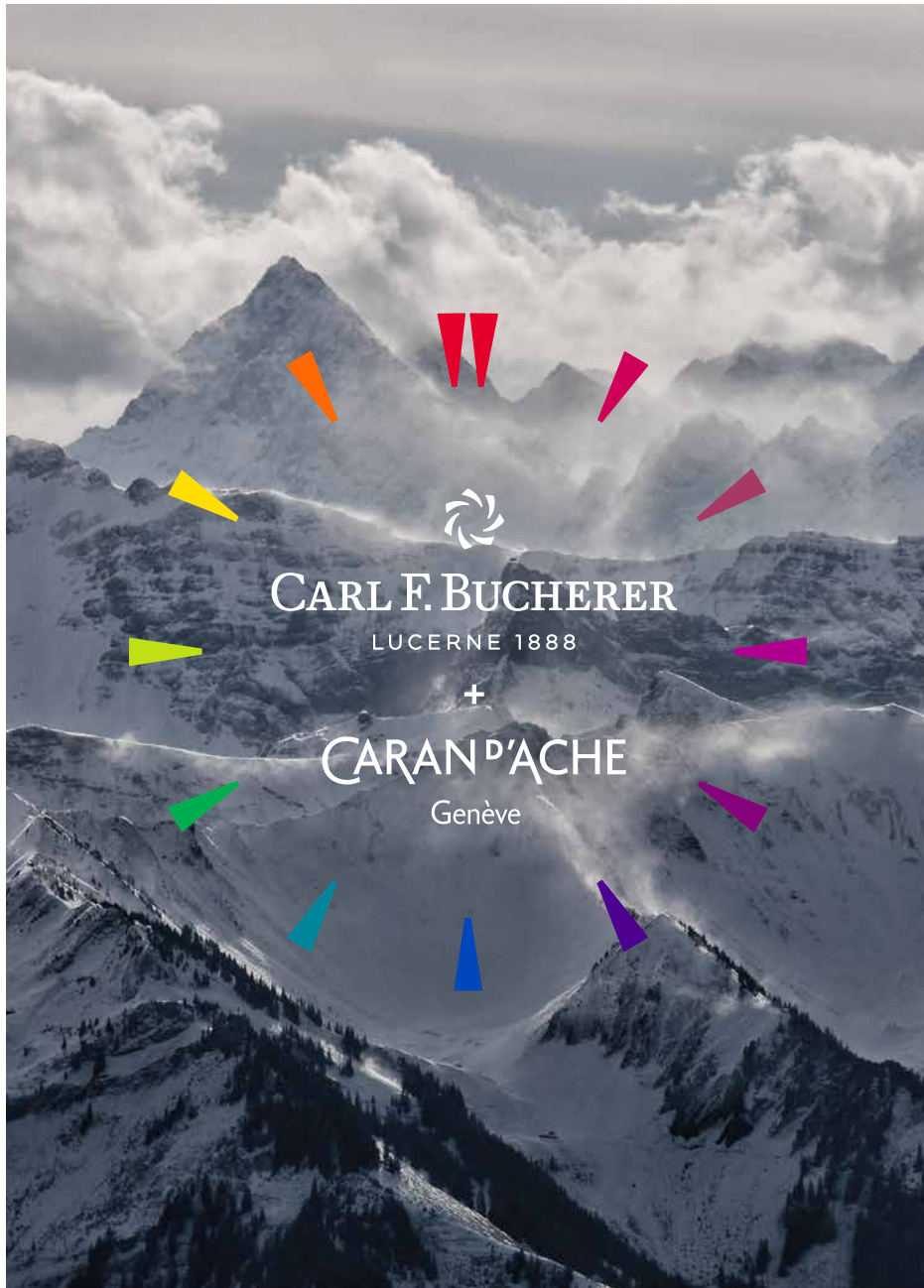
- Stainless steel pin lock folding clasp





Travel & Exploration

At Carl F. Bucherer, we have been driven by a passion for travel and exploration since Carl Friedrich Bucherer opened his first boutique for watches and jewelry in Lucerne in 1888, and the same sense of adventure remains an important part of our identity. The Travel & Exploration brand world reflects the spirit of our founder and his family. Nearly 100 years ago, members of our founding family started looking for ways to take their Swiss watchmaking values to distant lands across the sea. It seems quite fitting that, a century later, we still make some of the finest travel watches in the world.



CARL F. BUCHERER +

CARAN D'ACHE -

CELEBRATING SIGNATURE MOMENTS

Certain events change our lives forever. Two iconic Swiss manufacturers have created a unique pairing of a watch and a pen to mark these signature moments that we will cherish and forever remember. The impressive Carl F. Bucherer Manero Flyback Signature watch and a magnificent pen crafted by Caran d'Ache, one of the world's most admired creators of writing and drawing instruments, are elegantly partnered to commemorate these signature moments.

Carl F. Bucherer and Caran d'Ache are the most natural of partners: Both opened their doors in Switzerland well over a century ago and remain family-led companies. Both are admired around the world for their craftsmanship, their design, and their quest for excellence.

And while Carl F. Bucherer and Caran d'Ache proudly manufacture analog products in a digital age, they have demonstrated that they are prepared to take their quality, innovation, and creativity into a more sustainable future.



SIGNATURE PAIRING

ROLLERBALL PEN +

MANERO FLYBACK

 **CARL F. BUCHERER** + **CARAN D'ACHE**
LUCERNE 1888 Genève



REF **00.10919.08.13.98**

BODY

- Rhodium- and silver-coated body with deep “crown effect” engraving
- Decorated with hand-lacquered triangles in 12 different colors in reference to Caran d’Ache color wheel

DIAMETER

- 12.2 mm
- Length 135.73 mm

LIMITED EDITION

- 188 signature sets

CAP

- Graphite grey hexagonal isotype in reference to the watch counters and Caran d’Ache graphite pencils
- Decorated with hand-lacquered triangles in 12 different colors in reference to Caran d’Ache color wheel

CLIP

- Hinged clip engraved with a line of Caran d’Ache red lacquer

ENGRAVINGS

- Engraved number on writing block – 001/188 to 188/188

CARTRIDGE

- Equipped with a black rollerball cartridge F

DIMENSIONS

- ø 43 mm
- Height 14.45 mm

MOVEMENT

- Automatic
- CFB 1970 caliber
- Power reserve 42 hours

FUNCTIONS

- Chronograph
 - Minute counter
 - Seconds counter
 - Flyback function
- Tachymeter scale
- Date
- Hour
- Minute
- Small seconds

COMPLEMENTARY STRAP WITH BUCKLE

CASE

- Stainless steel
- Double-domed sapphire crystal with anti-reflective coating on both sides
- Case back with sapphire crystal

WATER RESISTANCE

- 3 bar (30 m)

DIAL

- Silver colored with graphite grey counters
- 10 indices in rainbow colors

STRAP

- NATO textile strap, 100% recycled PET with calfskin patch (beige/grey/red), additional NATO textile strap, 100% recycled PET with calfskin patch (blue)

BUCKLE

- Stainless steel pin buckle



THE MANERO FLYBACK: WHEREVER TIME TAKES YOU...

The Manero Flyback not only celebrates the cosmopolitan spirit that has been an integral part of Carl F. Bucherer's DNA since 1888, but also puts a piece of "Made of Lucerne" watchmaking excellence on every well-traveled wrist, true to the words: "Wherever time takes you, Lucerne travels with you."

MANERO

FLYBACK



REF 00.10919.08.53.21

DIMENSIONS

- ø 43 mm
- Height 14.45 mm

MOVEMENT

- Automatic
- CFB 1970 caliber
- Power reserve 42 hours

FUNCTIONS

- Chronograph
 - Minute counter
 - Seconds counter
 - Flyback function
- Tachymeter scale
- Date
- Hour
- Minute
- Small seconds



REF 00.10919.08.53.01

CASE

- Stainless steel
- Double-domed sapphire crystal with anti-reflective coating on both sides
- Case back with sapphire crystal

WATER RESISTANCE

- 3bar (30m)

DIAL

- Blue
- 10 indices

STRAP/BRACELET

- Blue fabric or stainless steel

BUCKLE

- Stainless steel folding clasp or pin lock folding clasp



REF 00.10919.08.13.21

REF 00.10919.08.33.21

DIMENSIONS

- ø 43 mm
- Height 14.45 mm

MOVEMENT

- Automatic
- CFB 1970 caliber
- Power reserve 42 hours

FUNCTIONS

- Chronograph
 - Minute counter
 - Seconds counter
 - Flyback function
- Tachymeter scale
- Date
- Hour
- Minute
- Small seconds

CASE

- Stainless steel
- Double-domed sapphire crystal with anti-reflective coating on both sides
- Case back with sapphire crystal

WATER RESISTANCE

- 3 bar (30 m)

DIAL

- Silver or black
- 10 indices

STRAP/BRACELET

- Stainless steel

BUCKLE

- Stainless steel folding clasp



REF **00.10919.08.93.21**

DIMENSIONS

- \varnothing 43 mm
- Height 14.45 mm

MOVEMENT

- Automatic
- CFB 1970 caliber
- Power reserve 42 hours

FUNCTIONS

- Chronograph
 - Minute counter
 - Seconds counter
 - Flyback function
- Tachymeter scale
- Date
- Hour
- Minute
- Small seconds

CASE

- Stainless steel
- Double-domed sapphire crystal with anti-reflective coating on both sides
- Case back with sapphire crystal

WATER RESISTANCE

- 3bar (30m)

DIAL

- Petrol blue
- 10 indices

STRAP/BRACELET

- Stainless steel

BUCKLE

- Stainless steel folding clasp





THE PATRAVI TRAVELTEC: A TRUE COSMOPOLITAN SPIRIT

The technically ingenious Patravi TravelTec collection, whose patented mono-pusher enables the convenient adjustment of three separate time zones, represents true “Made of Lucerne” watchmaking while celebrating the desire to explore and discover that has driven the company since its foundation by Carl Friedrich Bucherer in 1888.

With four vivid new variants of the COSC-certified chronometer, Spring (green), Summer (yellow), Autumn (orange), and Winter (blue), Carl F. Bucherer offers modern globetrotters perfect companions for a stylish journey throughout the year: the Patravi TravelTec Color Edition Four Seasons.

PATRAVI TRAVELTEC

COLOR EDITION



REF 00.10620.08.53.02

DIMENSIONS

- ϕ 46.60 mm
- Height 15.50 mm

MOVEMENT

- Automatic
- CFB 1901.1 caliber
- COSC-certified chronometer
- Power reserve 42 hours

FUNCTIONS

- Chronograph
- Three time zones
- Date
- Hour
- Minute
- Small seconds



REF 00.10620.08.93.02

CASE

- Stainless steel
- Screw-down crown
- Sapphire crystal with anti-reflective coating on both sides

WATER RESISTANCE

- 5 bar (50 m)

DIAL

- Blue or green
- 9 indices

STRAP

- Rubber

BUCKLE

- Stainless steel folding clasp with comfort extension



REF 00.10620.08.93.01

DIMENSIONS

- \varnothing 46.60 mm
- Height 15.50 mm

MOVEMENT

- Automatic
- CFB 1901.1 caliber
- COSC-certified chronometer
- Power reserve 42 hours

FUNCTIONS

- Chronograph
- Three time zones
- Date
- Hour
- Minute
- Small seconds



REF 00.10620.08.93.03

CASE

- Stainless steel
- Screw-down crown
- Sapphire crystal with anti-reflective coating on both sides

WATER RESISTANCE

- 5 bar (50m)

DIAL

- Yellow or orange
- 9 indices

STRAP

- Rubber

BUCKLE

- Stainless steel folding clasp with comfort extension





CARL F. BUCHERER AND IGNIV:
AT HOME ANYWHERE
IN THE WORLD, ROOTED IN
THE HEART OF SWITZERLAND

What do the art of watchmaking and exquisite cuisine have in common? You will find that it is quite a lot. Excellence, passion, innovation, and high precision are the foundation of all genuinely exceptional creations in both Haute Horlogerie and Haute Cuisine. And there is more that unites Carl F. Bucherer and IGNIV: their partnership focuses on the aspect of shared time and the cosmopolitan spirit that is deeply enshrined in the corporate culture of both brands.

The company's partner, IGNIV, manifests it in its culinary concept. IGNIV's motto is: "We love to share." Its four teams run exclusive restaurants in Bad Ragaz, St. Moritz, Zurich, and Bangkok, and their guests get to treat themselves to a truly indulgent time.

IGNIV serves imaginative, award-winning dishes. In a cosmopolitan environment with regional charm, guests get to spend pleasurable hours and soak up the same openness that links the IGNIV family to the Lucerne manufacturer. Both companies are at home in the world, yet firmly rooted in the heart of Switzerland.



THE MANERO

AUTODATE LOVE

The Manero AutoDate LOVE with its array of colors and materials represents the stylish diversity of modern women today.

The graceful watches with the refined leaf decoration were created together with our Global Brand Ambassador, Chinese actress Li Bingbing, and are inspired by her charitable foundation L.O.V.E. Responsible Life.

International movie star Li Bingbing founded L.O.V.E. Responsible Life in 2009. The foundation supports various charitable projects and campaigns for people to adopt an environmentally responsible lifestyle. The initials L.O.V.E. stand for a number of values and themes that Li Bingbing wants to promote with her organization, including Life, Original, Value, and Earth.

MANERO AUTODATE

LOVE



REF **00.10922.03.93.11**

DIMENSIONS

- \varnothing 35.50mm
- Height 9.15mm

MOVEMENT

- Automatic
- CFB 1971 caliber
- Power reserve 42 hours

FUNCTIONS

- Date
- Hour
- Minute
- Small seconds

DESIGN IN COOPERATION
WITH LI BINGBING

CASE

- 18K rose gold
- Domed sapphire crystal with anti-reflective coating on both sides
- Case back with sapphire crystal

SETTING

- 62 diamonds FC TW vs 0.65 ct

WATER RESISTANCE

- 3bar (30m)

DIAL

- Red
- 12 indices

STRAP

- Louisiana alligator leather
- Red

BUCKLE

- 18K rose gold pin buckle



REF **00.10922.07.93.01**

CASE

- Stainless steel/18K rose gold
- Domed sapphire crystal with anti-reflective coating on both sides
- Case back with sapphire crystal

WATER RESISTANCE

- 3bar (30m)

DIAL

- Red
- 12 indices

STRAP

- Louisiana alligator leather
- Red

BUCKLE

- Stainless steel pin lock folding clasp



REF **00.10922.07.93.21**

CASE

- Stainless steel/18K rose gold
- Domed sapphire crystal with anti-reflective coating on both sides
- Case back with sapphire crystal

WATER RESISTANCE

- 3bar (30m)

DIAL

- Red
- 12 indices

BRACELET

- Stainless steel/18K rose gold

BUCKLE

- Stainless steel folding clasp

MANERO AUTODATE

LOVE



REF **00.10922.07.53.01**

DIMENSIONS

- \varnothing 35.50 mm
- Height 9.15 mm

MOVEMENT

- Automatic
- CFB 1971 caliber
- Power reserve 42 hours

FUNCTIONS

- Date
- Hour
- Minute
- Small seconds

DESIGN IN COOPERATION
WITH LI BINGBING

CASE

- Stainless steel/18K rose gold
- Domed sapphire crystal with anti-reflective coating on both sides
- Case back with sapphire crystal

WATER RESISTANCE

- 3 bar (30m)

DIAL

- Ice-blue
- 12 indices

STRAP

- Crocodile leather
- Ice-blue

BUCKLE

- Stainless steel pin lock folding clasp



REF **00.10922.07.53.21**

CASE

- Stainless steel/18K rose gold
- Domed sapphire crystal with anti-reflective coating on both sides
- Case back with sapphire crystal

WATER RESISTANCE

- 3 bar (30m)

DIAL

- Ice-blue
- 12 indices

BRACELET

- Stainless steel/18K rose gold

BUCKLE

- Stainless steel folding clasp



REF **00.10922.08.53.01**

CASE

- Stainless steel
- Domed sapphire crystal with anti-reflective coating on both sides
- Case back with sapphire crystal

WATER RESISTANCE

- 3 bar (30m)

DIAL

- Ice-blue
- 12 indices

STRAP

- Crocodile leather
- Ice-blue

BUCKLE

- Stainless steel pin lock folding clasp

MANERO AUTODATE

LOVE



REF 00.10922.08.73.11

DIMENSIONS

- \varnothing 35.50mm
- Height 9.15mm

MOVEMENT

- Automatic
- CFB 1971 caliber
- Power reserve 42 hours

FUNCTIONS

- Date
- Hour
- Minute
- Small seconds

DESIGN IN COOPERATION
WITH LI BINGBING

CASE

- Stainless steel
- Domed sapphire crystal with anti-reflective coating on both sides
- Case back with sapphire crystal

SETTING

- 62 diamonds FC TW vs 0.65ct

WATER RESISTANCE

- 3bar (30m)

DIAL

- White mother-of-pearl
- 12 indices

STRAP

- Louisiana alligator leather
- Purple

BUCKLE

- Stainless steel pin lock folding clasp



REF 00.10922.08.73.01

CASE

- Stainless steel
- Domed sapphire crystal with anti-reflective coating on both sides
- Case back with sapphire crystal

WATER RESISTANCE

- 3bar (30m)

DIAL

- White mother-of-pearl
- 12 indices

STRAP

- Louisiana alligator leather
- Purple

BUCKLE

- Stainless steel pin lock folding clasp



REF 00.10922.08.73.21

CASE

- Stainless steel
- Domed sapphire crystal with anti-reflective coating on both sides
- Case back with sapphire crystal

WATER RESISTANCE

- 3bar (30m)

DIAL

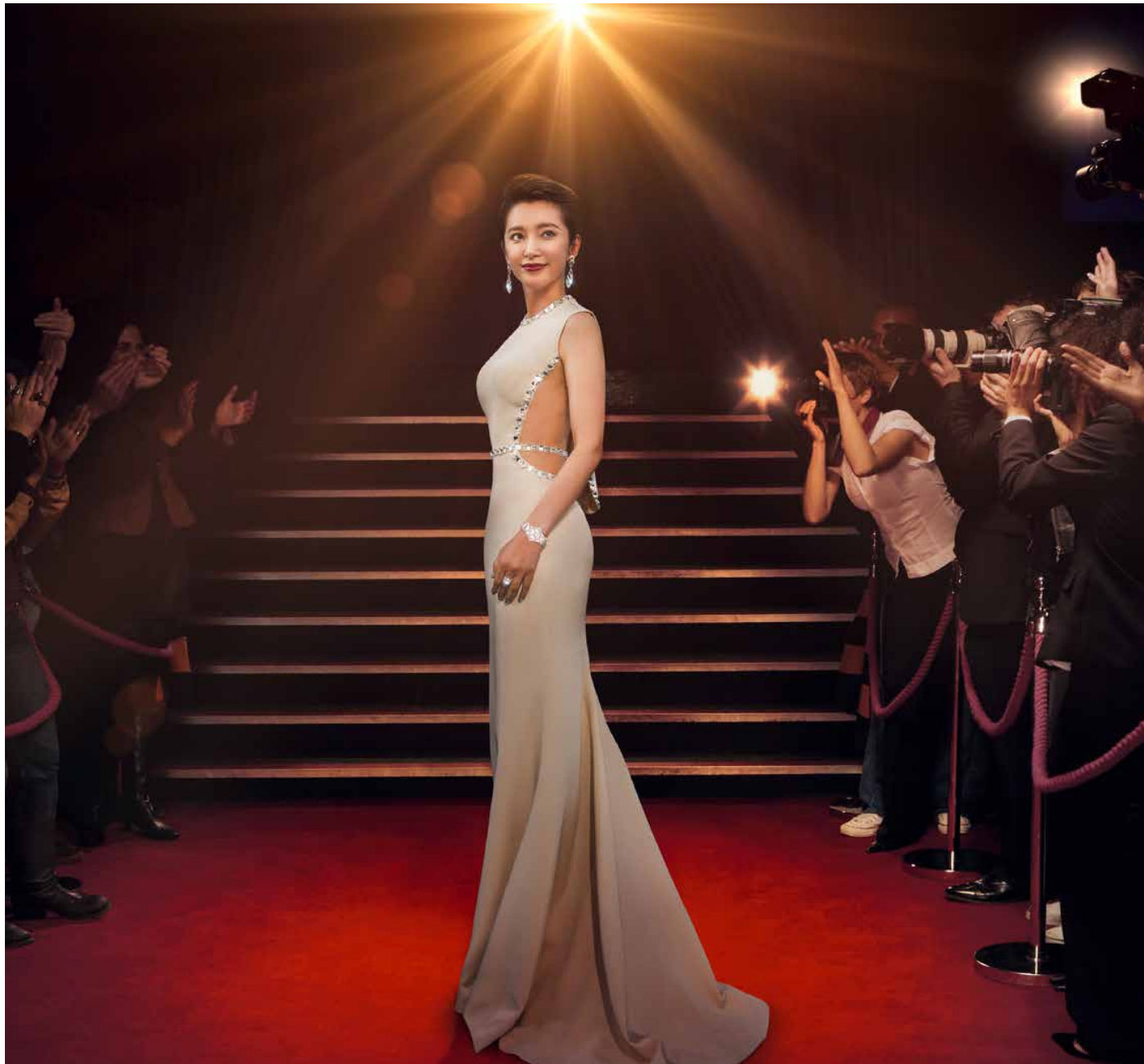
- White mother-of-pearl
- 12 indices

BRACELET

- Stainless steel

BUCKLE

- Stainless steel folding clasp



Entertainment

& Style

As its name suggests, the watches in our Entertainment & Style brand world would be at home in Hollywood or Bollywood – or on any red carpet anywhere in the world.

These uncompromisingly fashionable timepieces have been enthusiastically embraced by inspiring women on every continent. They are sparkling examples of the distinctively feminine watches that have always been an important part of Carl F. Bucherer's product selection. Li Bingbing, the brilliant Chinese actress and singer who is also a long-standing Carl F. Bucherer Global Brand Ambassador, sets the tone for our Entertainment & Style brand world. These watches are ready for their close-up!

CARL F. BUCHERER AND WOMEN IN BUSINESS: DEDICATED TO INSPIRING WOMEN

Inspiring women have been pacesetters for the development of Carl F. Bucherer ever since 1888. This is not only reflected in various product lines in our collection, but also in the numerous partnerships we maintain and cherish with outstanding women around the world. There is the award-winning Chinese actress Li Bingbing – the first Global Brand Ambassador for Carl F. Bucherer – the Olympic and World Champion Wendy Holdener, professional soccer player Ramona Bachmann, and the outstanding athletes of the Swiss national women's soccer team. Together with the many talented women in Carl F. Bucherer's manufacture and company worldwide, they stand in the long-established tradition of powerful, entrepreneurial women such as Wilhelmina Bucherer-Heeb, who have used their talent to be shining beacons, setting an example and inspiring others with their passion, creativity, and courage.

Thus, Carl F. Bucherer is especially excited to be partnering with WOMEN IN BUSINESS, the community of women in leading positions in Switzerland, for joint projects, interesting talks, and new media formats – paying tribute to the inspiring women who shape time daily.





THE ADAMAVI COLLECTION: THE JOY OF TIMELESS DESIGN

As a collection, the Adamavi line stands for the joy of timeless design and expresses a unique philosophy: the quest to preserve values. Translated from Latin, Adamavi means “to love something” or “to enjoy something.” All models in the line are characterized by their pure, timeless elegance, their impressive complications, and their superb quality.

ADAMAVI

FULL CALENDAR



REF **00.10324.08.13.01**

DIMENSIONS

- \varnothing 39mm
- Height 10.10mm

MOVEMENT

- Automatic
- CFB 1966 caliber
- Power reserve 42 hours

FUNCTIONS

- Month
- Date
- Day of the week
- Moon phase
- Hour
- Minute
- Seconds



REF **00.10324.08.13.21**

CASE

- Stainless steel
- Sapphire crystal
- Case back with sapphire crystal

WATER RESISTANCE

- 3 bar (30m)

DIAL

- Silver with vertical satin finish
- 12 rose gold colored indices
(double index at 12 o'clock)

STRAP / BRACELET

- Alligator leather or stainless steel

BUCKLE

- Stainless steel pin buckle or folding clasp



REF **00.10324.08.33.01**

DIMENSIONS

- \varnothing 39mm
- Height 10.10mm

MOVEMENT

- Automatic
- CFB 1966 caliber
- Power reserve 42 hours

FUNCTIONS

- Month
- Date
- Day of the week
- Moon phase
- Hour
- Minute
- Seconds



REF **00.10324.08.33.21**

CASE

- Stainless steel
- Sapphire crystal
- Case back with sapphire crystal

WATER RESISTANCE

- 3bar (30m)

DIAL

- Black with vertical satin finish
- 12 rose gold colored indices
(double index at 12 o'clock)

STRAP/BRACELET

- Alligator leather or stainless steel

BUCKLE

- Stainless steel pin buckle or folding clasp

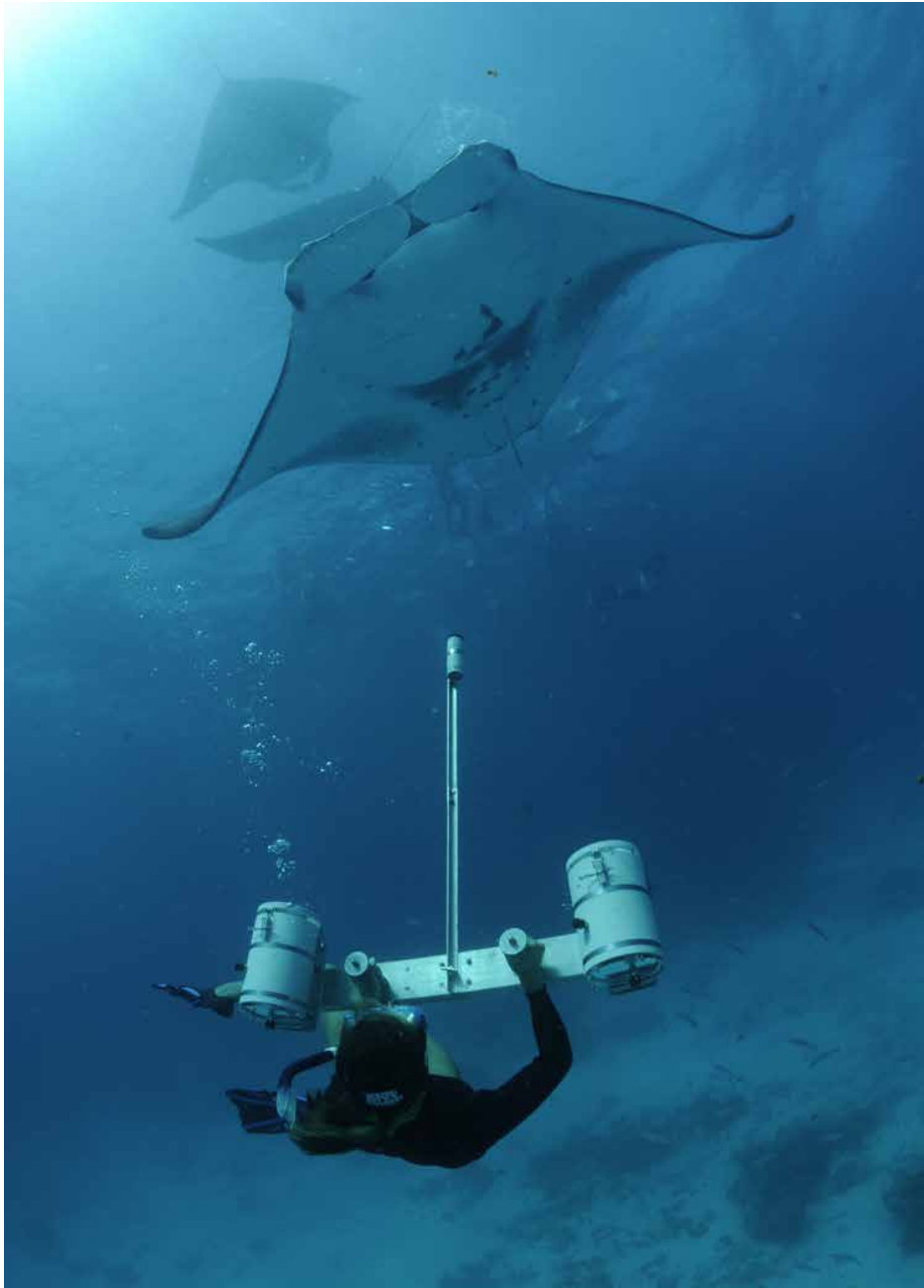




Sport

& Adventure

The Sport & Adventure brand world expresses an important part of Carl F. Bucherer's identity. As the name suggests, it is characterized by its key partnerships with outstanding athletes in a number of sporting disciplines. And nothing could represent Carl F. Bucherer's passion for adventure better than its long-standing partnership with the Manta Trust. Together with this great charity, the brand is committed to making a lasting contribution to the conservation of the manta ray and the ecosystem that sustains this rare and fascinating species.



CARL F. BUCHERER

AND THE MANTA TRUST

The cooperation with the Manta Trust – a charitable foundation based in the UK and dedicated to the rare manta rays – is something very close to our hearts. With important projects and tireless educational work, the Manta Trust is committed to the survival of this endangered species in more than 20 countries. The aim is to preserve the marine ecosystem and, by extension, the habitat of the manta rays. Carl F. Bucherer has proudly supported the charity for many years and is always inspired by its commitment.



THE PATRAVI SCUBATEC MALDIVES: ENABLER OF A FLOATING RESEARCH STATION

A charitable contribution for each Patravi ScubaTec Maldives sold will support a remarkable new Manta Trust initiative: the creation of a floating research station in the Maldives in 2021. This new project, brought to life by the partnership between Carl F. Bucherer and the Manta Trust, will allow the world's leading manta ray experts to reach remote areas within the Maldives and observe and record – in real time – manta ray behavior and even new manta ray subpopulations. It elevates the partnership between the watch brand and the NGO to the next level and provides a wonderful opportunity for manta ray research.

PATRAVI SCUBATEC

MALDIVES



REF **00.10632.23.53.02**

DIMENSIONS

- \varnothing 44.60 mm
- Height 13.45 mm

MOVEMENT

- Automatic
- CFB 1950.1 caliber
- COSC-certified chronometer
- Power reserve 38 hours

FUNCTIONS

- Date
- Hour
- Minute
- Seconds

CASE

- Stainless steel
- Stainless steel/ceramic bezel
- Automatic helium release valve
- Screw-down crown
- Sapphire crystal with anti-reflective coating on both sides

WATER RESISTANCE

- 50 bar (500 m)

DIAL

- Blue
- 12 indices

STRAP

- Rubber/recycled PET

BUCKLE

- Diver's adjustable folding clasp in stainless steel



FOR SPORTS ENTHUSIASTS,
FOR ADVENTURERS,
AND FOR A GOOD CAUSE:
THE PATRAVI SCUBATEC BLACK

The Patravi ScubaTec Black is striking, powerful, resilient – and dressed in deep black. Thanks to its water resistance of 50 bar (500 m) and certified chronometer precision, it is up for any adventure above or below water.

Part of the proceeds from this watch will once again go to a project close to the company's heart: the "Manta Trust" foundation, which is committed to preserving manta rays and their habitats.

Also, in this version, the rubber strap's textile insert is made of 100 % recycled plastic bottles recovered from the oceans, a contribution to environmental protection and sustainability.

PATRAVI SCUBATEC

BLACK



REF **00.10632.28.33.01**

DIMENSIONS

- \varnothing 44.60 mm
- Height 13.45 mm

MOVEMENT

- Automatic
- CFB 1950.1 caliber
- COSC-certified chronometer
- Power reserve 38 hours

FUNCTIONS

- Date
- Hour
- Minute
- Seconds

CASE

- DLC-coated titanium
- Titanium/ceramic bezel
- Automatic helium release valve
- Screw-down crown
- Sapphire crystal with anti-reflective coating on both sides

WATER RESISTANCE

- 50 bar (500 m)

DIAL

- Black
- 12 indices

STRAP

- Rubber/recycled PET

BUCKLE

- Diver's adjustable folding clasp in DLC-coated titanium

It was our pleasure to introduce you to our Watchmakers' Selection, but, as you certainly know by now, Carl F. Bucherer's watchmakers never rest on their laurels. Their creative energies are always directed toward developing innovative new timepieces. Each of these has its own story to tell, and we invite you to discover our entire collection at carl-f-bucherer.com.

Maison & Heritage



*Manero
Minute Repeater
Symphony*



*Heritage
BiCompax
Annual*



*Heritage
BiCompax
Annual*



*Heritage
BiCompax
Annual*



*Heritage
BiCompax
Annual*



*Heritage
BiCompax
Annual Lucerne*



*Manero
Flyback
Signature*



*Caran d'Ache
Signature
Rollerball Pen*



*Manero
Peripheral
BigDate*



*Manero
Peripheral
BigDate*



*Manero
Peripheral
BigDate*



*Manero
Peripheral
BigDate*

Travel & Exploration



*Patravi
TravelTec*



*Patravi
TravelTec*



*Patravi
TravelTec*



*Patravi
TravelTec*

Travel & Exploration



*Manero
AutoDate LOVE*



*Manero
AutoDate LOVE*



*Manero
AutoDate LOVE*



*Manero
AutoDate LOVE*



*Manero
AutoDate LOVE*



*Manero
AutoDate LOVE*



*Manero
Flyback*



*Manero
Flyback*



*Manero
Flyback*



*Manero
Flyback*



*Manero
Flyback*



*Manero
AutoDate LOVE*



*Manero
AutoDate LOVE*



*Manero
AutoDate LOVE*

Entertainment & Style



*Adamavi
Full Calendar*



*Adamavi
Full Calendar*



*Adamavi
Full Calendar*



*Adamavi
Full Calendar*

Sport & Adventure



*Patravi
ScubaTec
Maldives*



*Patravi
ScubaTec
Black*

Thank you for exploring this small selection from the Carl F. Bucherer collection. We hope that you will take the opportunity to discover all of our watches and enjoy a deeper insight into our brand by visiting us at carl-f-bucherer.com and on our social media channels:



